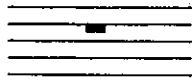


Whole, Half and Quarter Rests

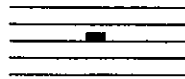
Music is not only made up of sounds, but also the silence between sounds. The duration of musical silence is determined by the value of the REST.

A **WHOLE REST** means to rest for a whole measure.



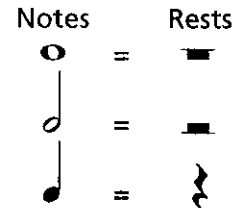
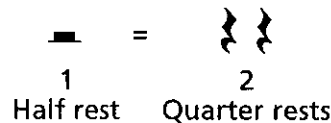
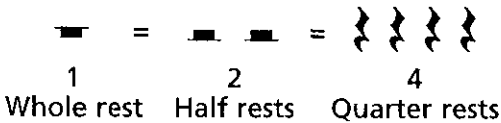
It hangs down from the 4th line.

A **HALF REST** is equal to half of a whole rest.



It sits on the 3rd line.

A **QUARTER REST** is equal to one quarter of a whole rest.



In $\frac{4}{4}$ time:

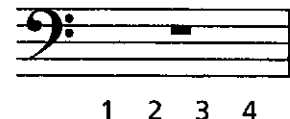
Quarter rests are equal to 1 beat.



Half rests are equal to 2 beats.



Whole rests are equal to 4 beats.



Exercises

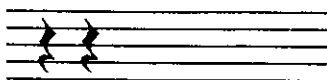
1 Fill in the correct number:

- a. 2 =
- b. =
- c. =
- d. =

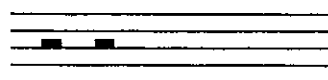
2 Fill in the correct number:

- a. =
- b. =
- c. =
- d. =

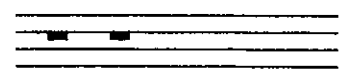
3 Trace the 2nd quarter rest, then draw 4 more.



4 Fill in the 2nd half rest, then draw 4 more.



5 Fill in the 2nd whole rest, then draw 4 more.



6 a. Divide the staff below into 4 measures with a double bar at the end.

b. Add a $\frac{4}{4}$ time signature.

c. Fill in the 1st bar with a whole rest, the 2nd bar with 2 half rests, the 3rd bar with 4 quarter rests, the 4th bar with 1 half rest and 2 quarter rests.

