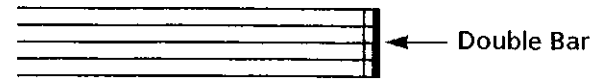
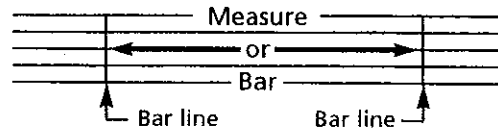


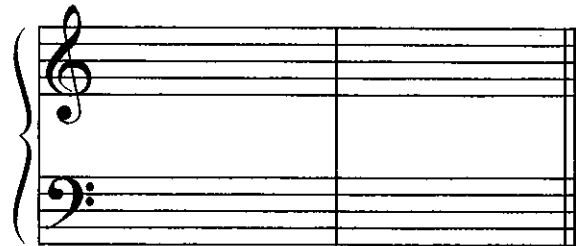
# Measure, Bar Line and Double Bar

Music is divided into equal parts by **BAR LINES**. The area between the two bar lines is called a **MEASURE** or **BAR**.

A **DOUBLE BAR** is written at the end of a piece of music. It is made up of one thin and one thick line, with the thick line always on the outside.

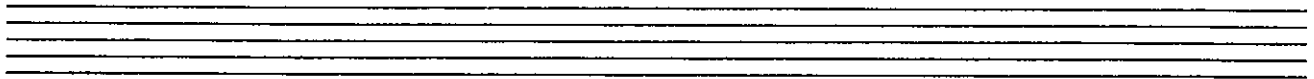


On a grand staff, the bar lines and double bar pass through the entire staff.

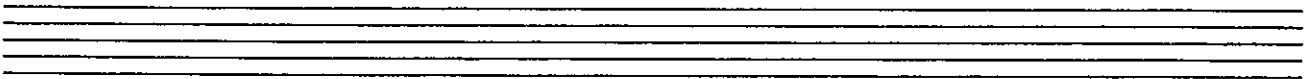


## Exercises

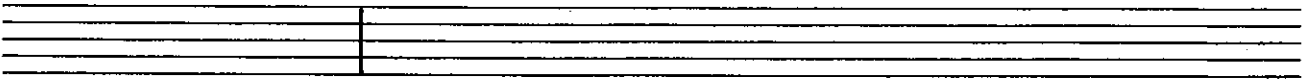
- 1 Divide the staff below into 4 measures with a double bar at the end. A single staff does not begin with a bar line.



- 2 Draw a treble clef. Divide the staff below into 4 measures with a double bar at the end. Write any whole note in each measure. Name the notes on the lines below the staff.



- 3 Draw a bass clef. Divide the staff below into 4 measures with a double bar at the end. Write any 4 quarter notes (alternate stem direction) in each measure. Name the notes on the lines below the staff.



- 4 Draw a grand staff. Divide the staff below into 4 measures with a double bar at the end. Write any two half notes in each measure (alternate stem direction and staves). Name the notes on the lines below the staff. Begin with a bar line (before the clef signs) when there is a grand staff.

