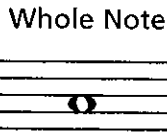


Note Values

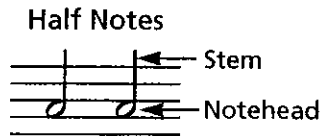
While the placement of notes on the staff indicates the pitch, the duration of the note (how long the note is held) is determined by the note value.

A **WHOLE NOTE** is drawn as an open oval.



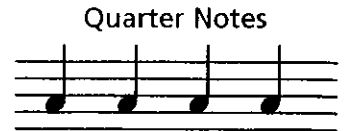
1 Whole note

Two **HALF NOTES** equal the duration of one whole note.



2 Half notes

Four **QUARTER NOTES** equal the duration of one whole note.



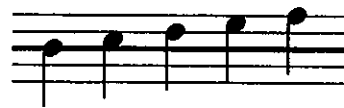
4 Quarter notes

1 Whole note = 2 Half notes

2 Half notes = 4 Quarter notes

1 Half note = 2 Quarter notes

Stems extend *downward* on the left side when the note appears *on or above* the 3rd line of the staff.



Stems extend *upward* on the right side when the note appears *below* the 3rd line of the staff.



The stem length should continue to the space or line with the same letter name, above or below.

Stem extends to F above.



Stem extends to F below.



Exercises

1 Fill in the blanks with the correct number:

a. 4 =

b. 2 =

c. 1 =

d. 2 =

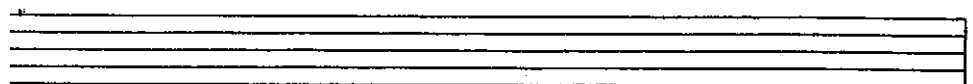
e. 4 =

f. 2 =

2 Draw the stems in the correct direction with the correct length. Write the names of the notes between the staff.

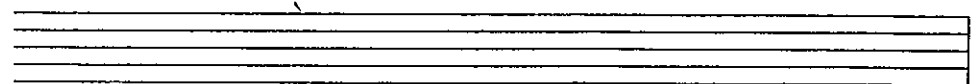


3 Draw the treble clef and write the indicated notes. Use only notes within the staff.



C whole A quarter E half F whole B quarter D quarter G half

4 Draw the bass clef and write the indicated notes. Use only notes within the staff.



E half D quarter A whole C quarter F half B whole G half