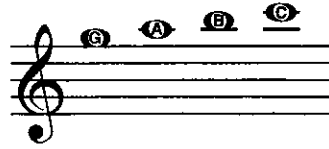


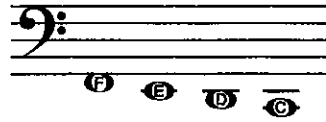
# Ledger Lines

## Low and High Notes

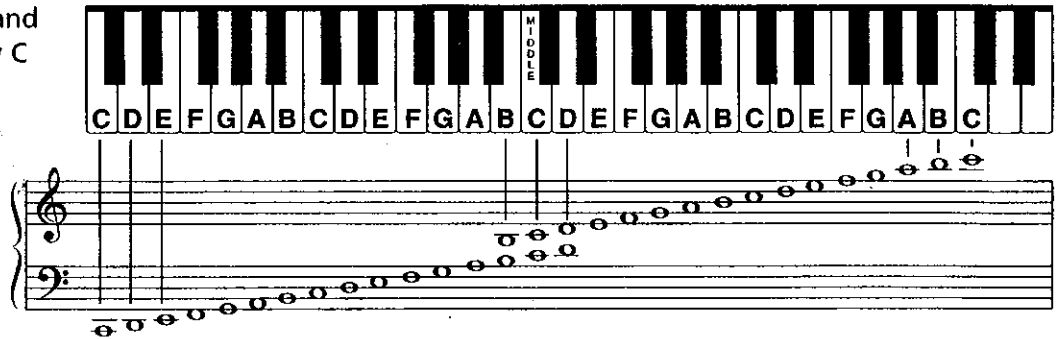
More than one ledger line may be added to extend the lower and upper ranges of the grand staff. The next higher notes of the treble staff are G, A, B and C.



The next lower notes of the bass staff are F, E, D and C.

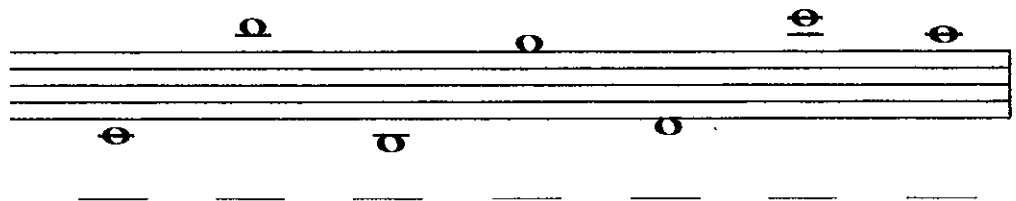


All the notes on the grand staff from bass clef Low C to treble clef High C:

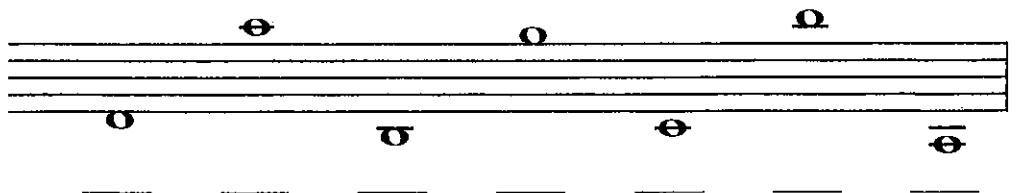


# Exercises

1 Draw a treble clef and name the notes.



2 Draw a bass clef and name the notes.



3 Write each of the indicated notes in four places on the grand staff.

