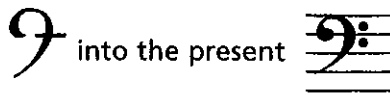


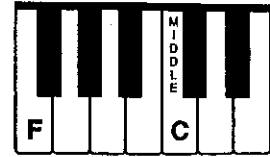
Bass Clef and Staff

The BASS CLEF (pronounced "base") is used for notes in the lower pitch ranges. The bass (or F) clef has evolved from a stylized letter F:



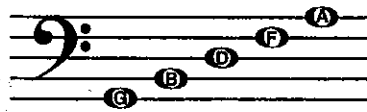
The two dots of the bass clef surround the line on which the note F is placed. This F is below middle C.

The BASS STAFF



In the bass staff, the names of the notes on the lines from bottom to top are G, B, D, F, A.

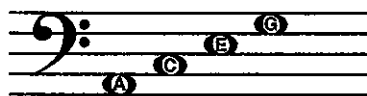
Line Notes



Good Boys Do Fine Always

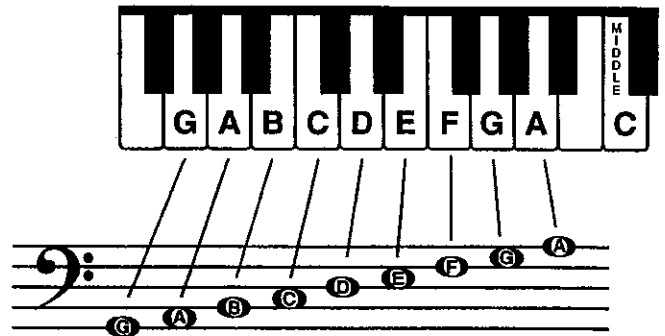
The names of the notes in the spaces from bottom to top are A, C, E, G.

Space Notes



All Cows Eat Grass

All the notes of the BASS STAFF:



Exercises

- The bass clef is written in four motions. Trace along the dotted lines as indicated, then draw four more.

Motion 1: Dot on 4th line Motion 2: Curved line Motions 3 & 4: Dots surrounding 4th line



- Write the letter names of the following notes.



- Write the notes on the staff indicated by the letters. If the notes can be written in two places, write one above the other.

