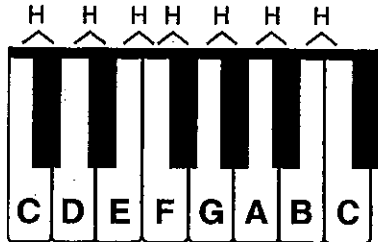
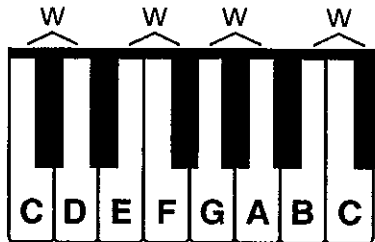


Whole Steps, Half Steps and Enharmonic Notes

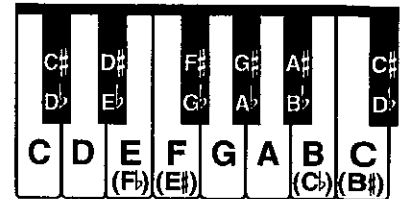
The distance from any key on the keyboard to the very next key above or below, whether black or white, is a HALF-STEP (H).



The distance from any key to two keys above or below, is a WHOLE STEP (W).



The key a half step up from C is C#. This key is also a half step down from D, and is also known as Db.

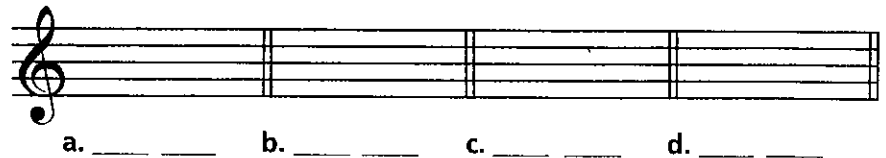


Many notes sound the same but are written differently. These notes are called ENHARMONIC NOTES.

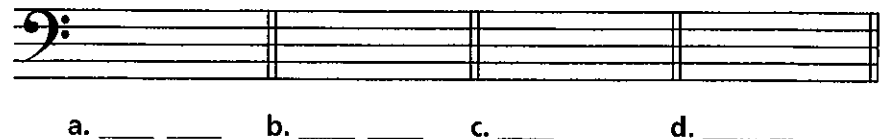
Exercises

- 1** The enharmonic note for F \flat is _____. The enharmonic note for E \sharp is _____.
 The enharmonic note for C \flat is _____. The enharmonic note for B \sharp is _____.

- 2** Write the 2 indicated enharmonic notes on the staff and name the notes in the spaces below:
- one half step above G
 - one half step below F
 - one half step below B
 - one half step above D



- 3** Write the indicated notes on the staff and the name of the note in the spaces below. If there are enharmonic notes, write both.
- one whole step above G \sharp
 - one whole step below F
 - one whole step below A
 - one whole step above E



- 4** Name the notes and indicate whether the distance between each pair of notes is a whole step (W) or a half step (H).

