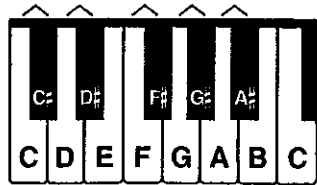


Sharps

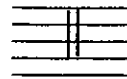
The SHARP sign (#) before a note raises the pitch of that note. On the keyboard, play the next key to the right, whether black or white.



When speaking of sharped notes, the word "sharp" comes after the letter name, as in **C sharp**. However, in written music, the sharp sign comes before the note.



To draw a sharp sign, first draw two vertical lines:



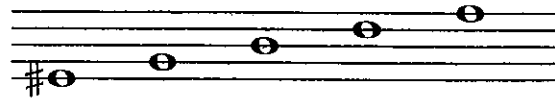
then add the heavier slanting lines:



When a sharp sign is attached to a line note, the sharp is centered on the line.



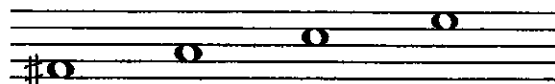
Add sharp signs to the line notes below.



When a sharp sign is attached to a space note, the sharp is centered in the space.

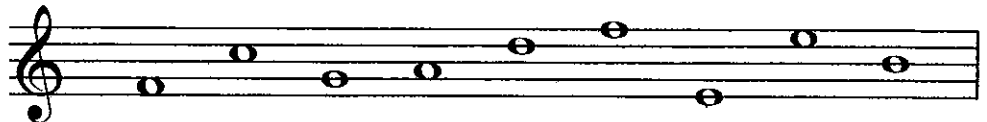


Add sharp signs to the space notes below.

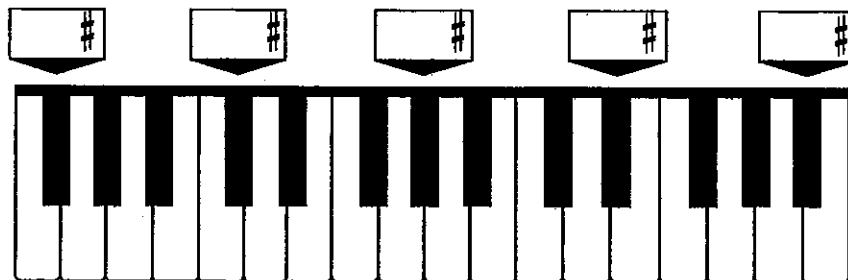


Exercises

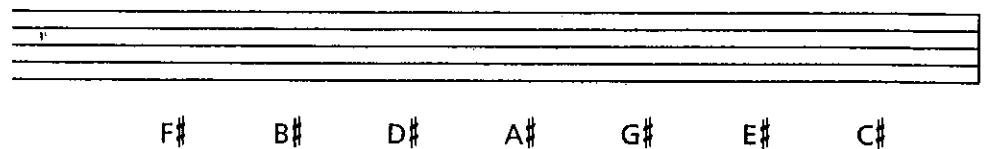
- In the example, write sharp signs before each note, then name the notes.



- Write the names of the piano keys in the boxes.



- Write a treble clef and the notes indicated on the staff using single 8th notes.



- Write a bass clef and the notes indicated on the staff using dotted half notes.

