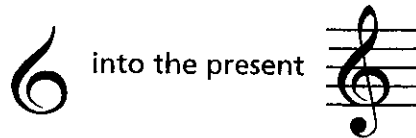


# Treble Clef and Staff

Music notes are named after the first seven letters of the alphabet, from A to G. By their position on the staff, they can represent the entire range of musical sound.

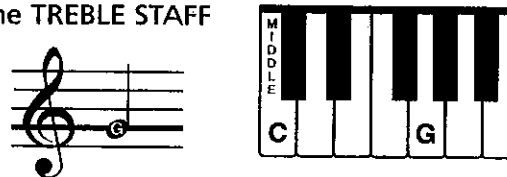
CLEF signs help to organize the staff so notes can easily be read.

The TREBLE CLEF is used for notes in the higher pitch ranges. The treble (or G) clef has evolved from a stylized letter G:

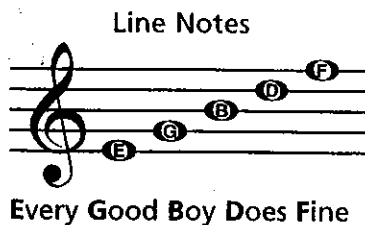


The curl of the treble clef circles the line on which the note G is placed. This G is above MIDDLE C (the C nearest the middle of the keyboard).

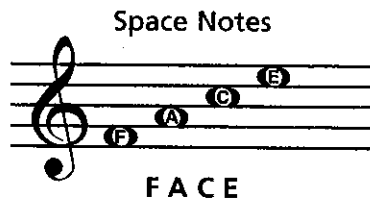
The TREBLE STAFF



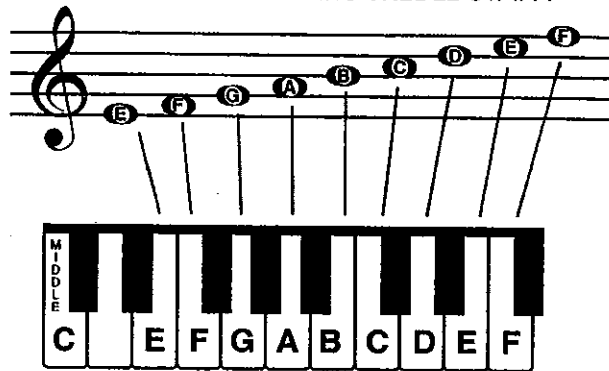
In the treble staff, the names of the notes on the lines from bottom to top are E, G, B, D, F.



The names of the notes in the spaces from bottom to top spell FACE.



All the notes of the TREBLE STAFF:

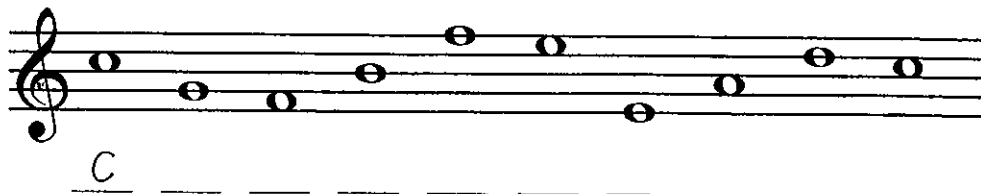


## Exercises

- The treble clef is written in two motions. Trace along the dotted lines as indicated, then draw four more.



- Write the letter names of the following notes. Use capital letters.



- Write the notes on the staff indicated by the letters. If the notes can be written in two places, write one above the other.

