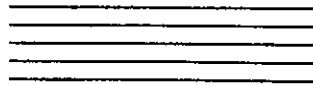


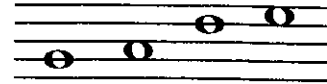
The Staff, Notes and Pitches

Music is written on a STAFF of five lines and the four spaces between.

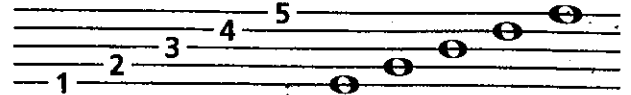


The STAFF

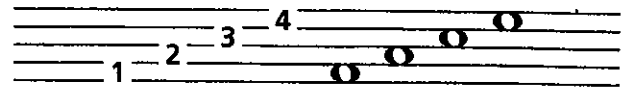
Music NOTES are oval-shaped symbols that are placed on the lines and in the spaces. They represent musical sounds, called PITCHES.



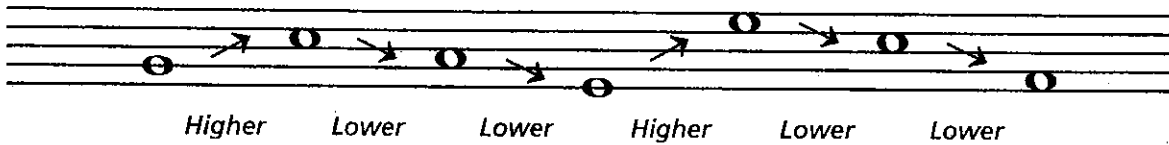
The lines of the staff are numbered from bottom to top.



The spaces between the lines are also numbered from bottom to top.



If the notes appear *higher* on the staff, they sound *higher* in pitch.
If the notes appear *lower* on the staff, they sound *lower* in pitch.

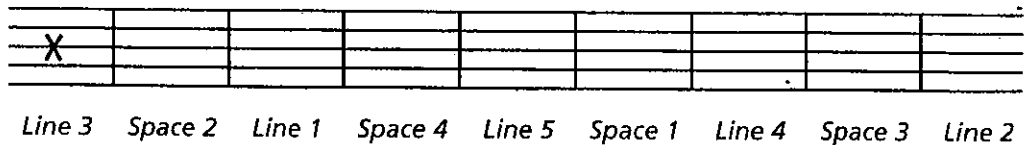


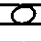
Exercises

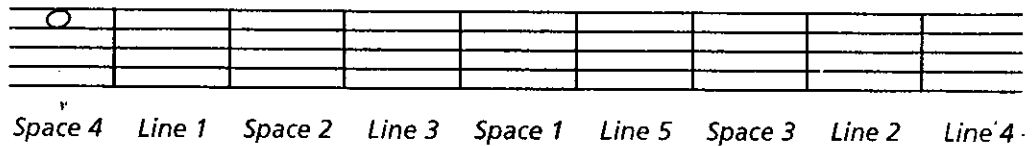
- 1** Draw a staff by connecting the dots. Use a ruler or straight edge. Number the lines, then the spaces from low to high.



- 2** On the staff, mark an X in the following locations:



- 3** Write notes like this  on the following lines and spaces:



- 4** Indicate whether the 2nd note is higher or lower than the 1st note by using an H (higher) or L (lower).

